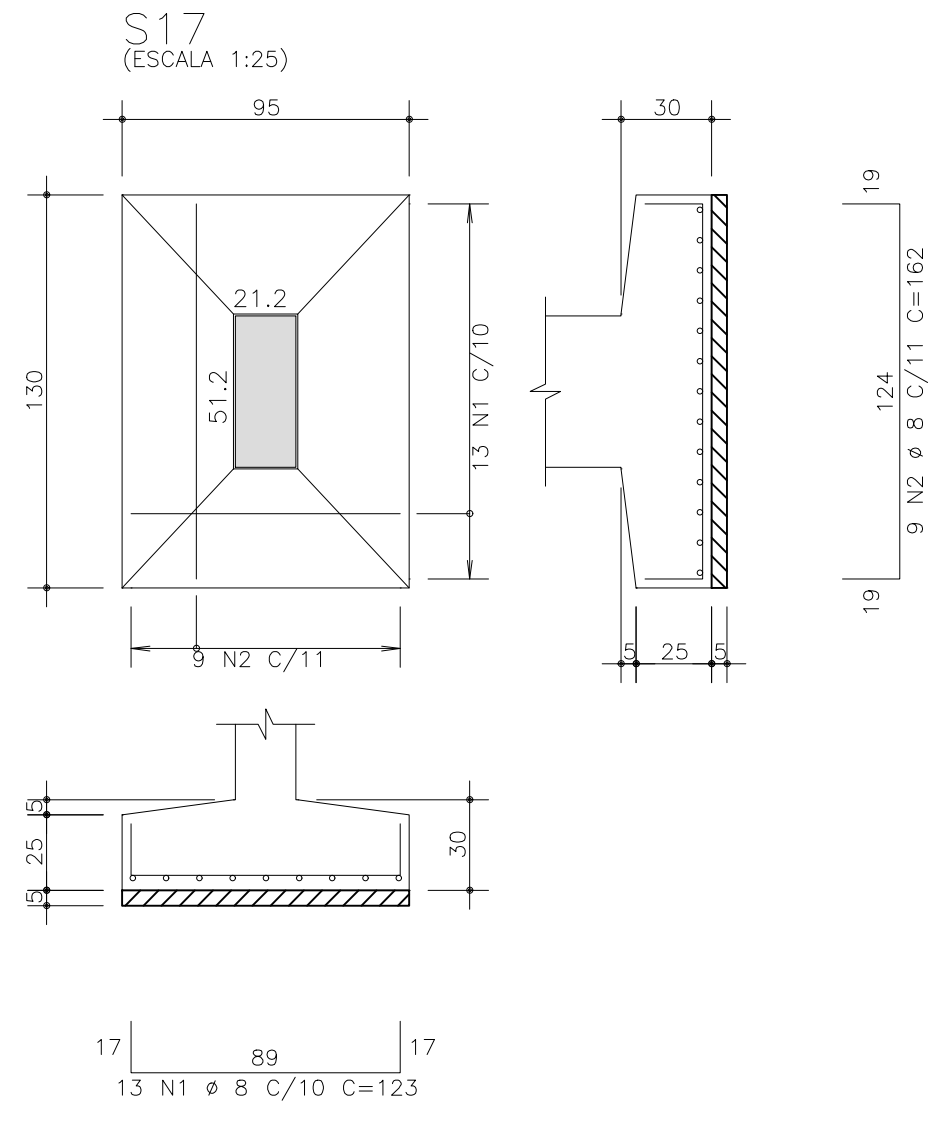
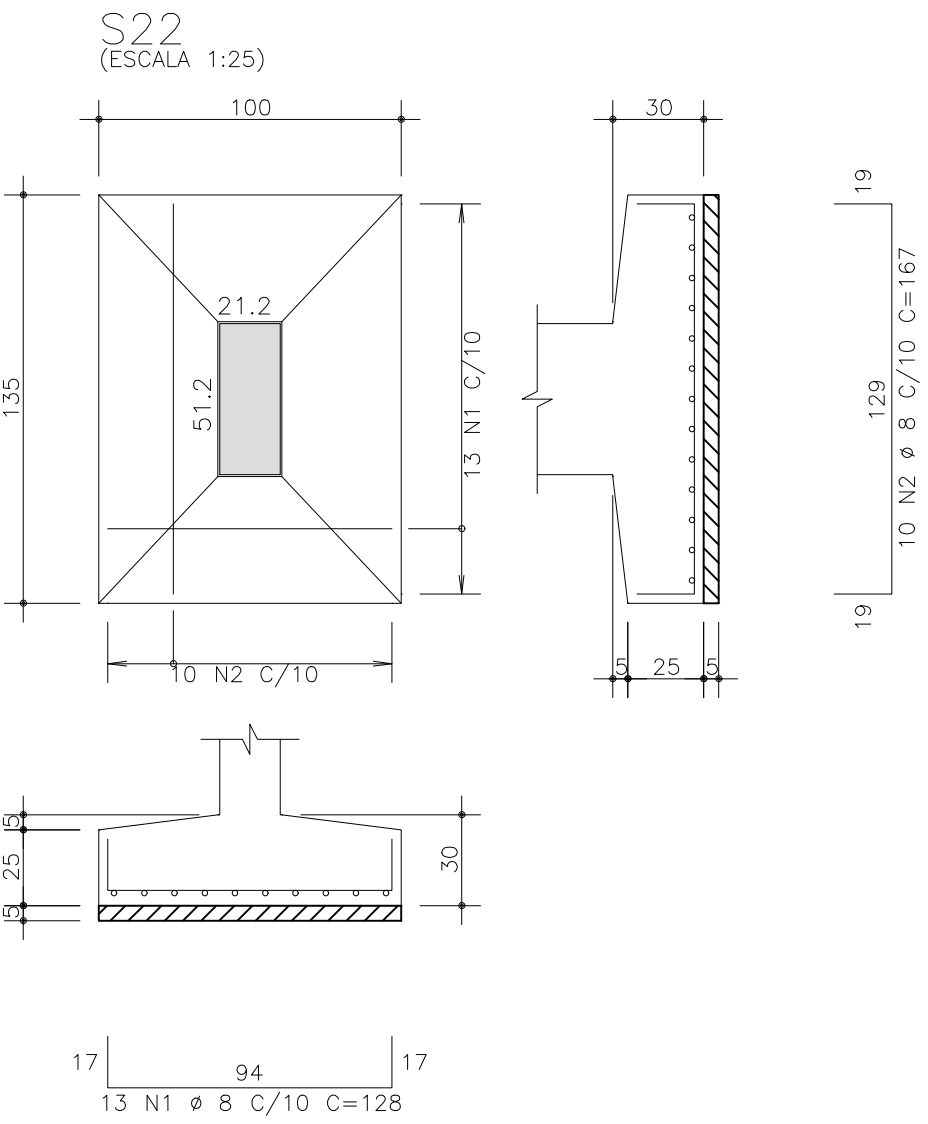
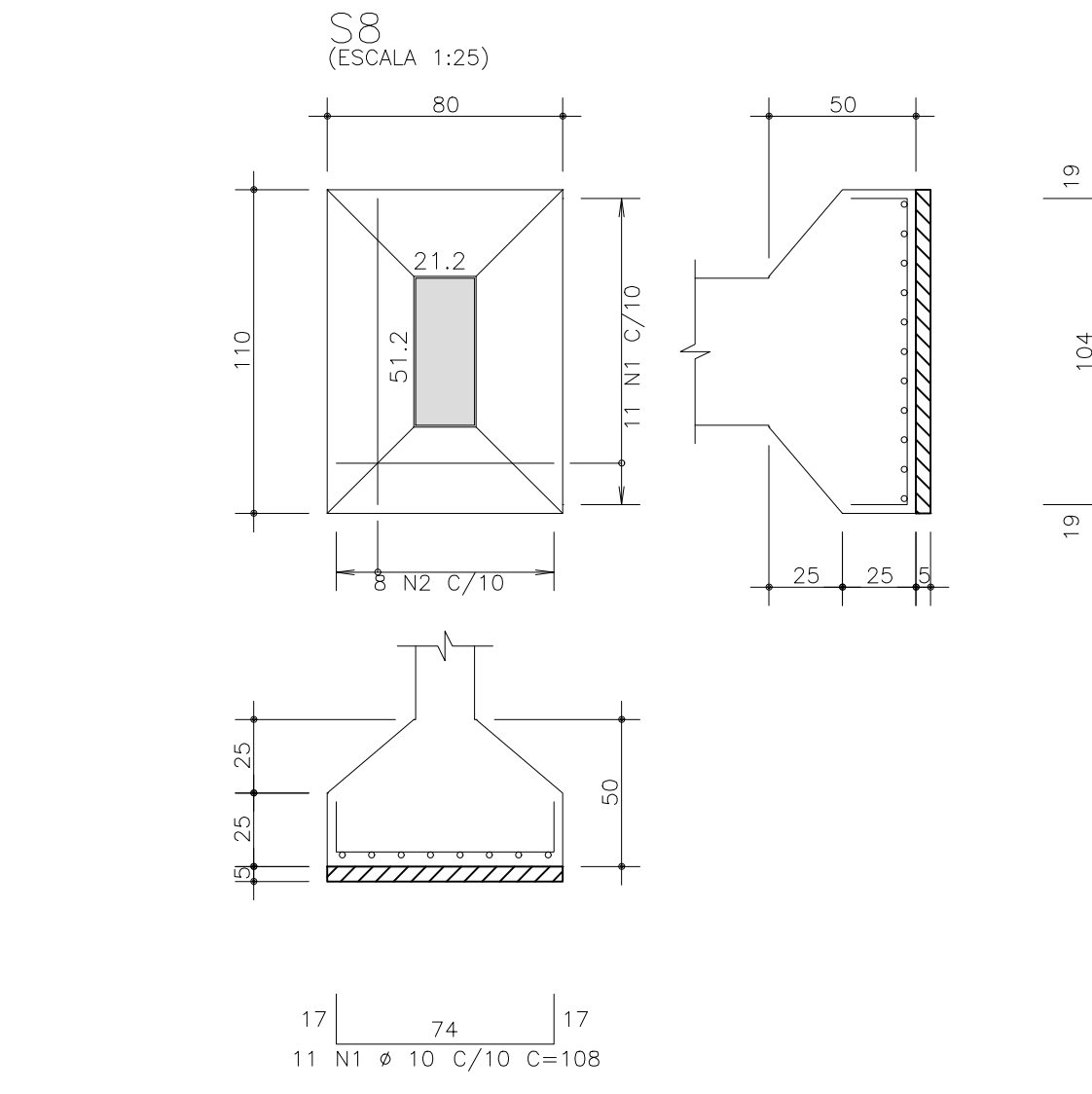
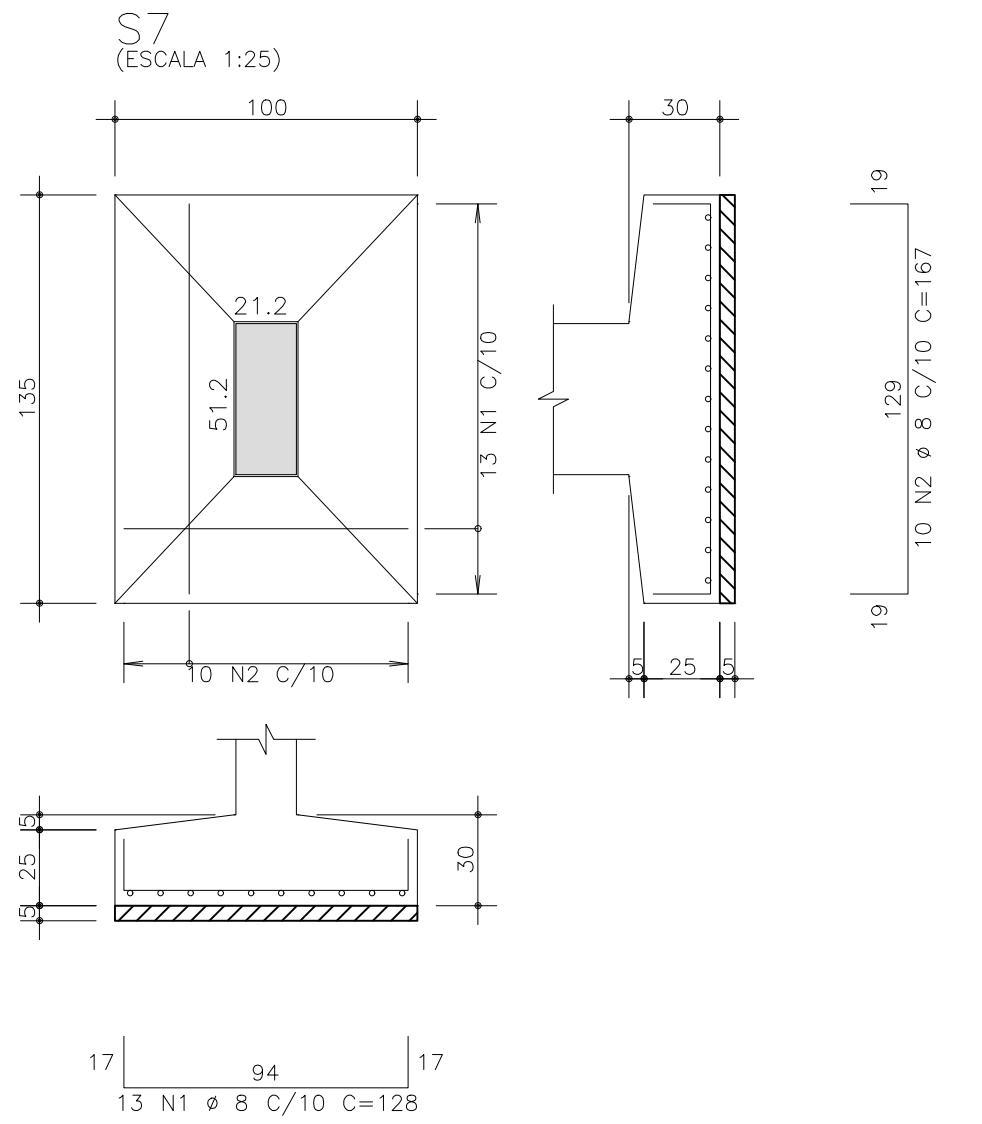
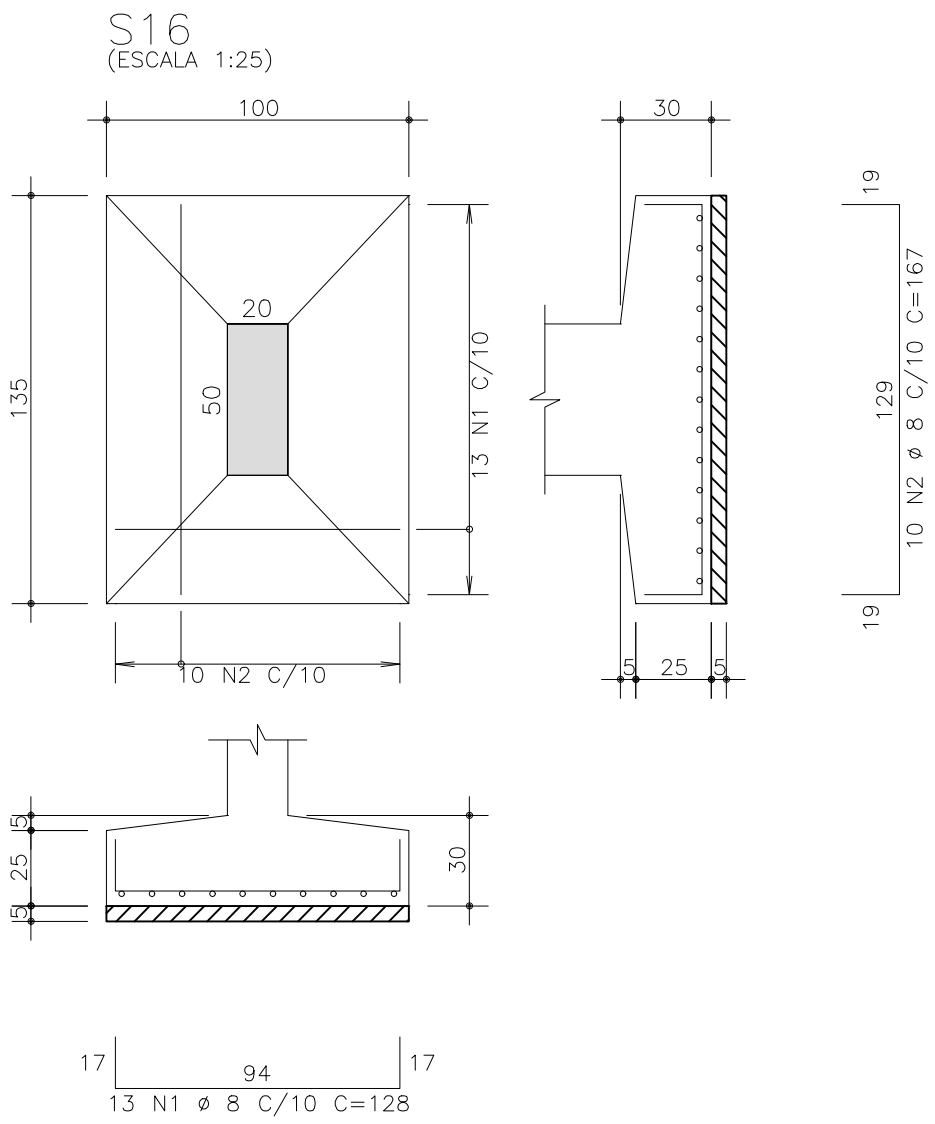
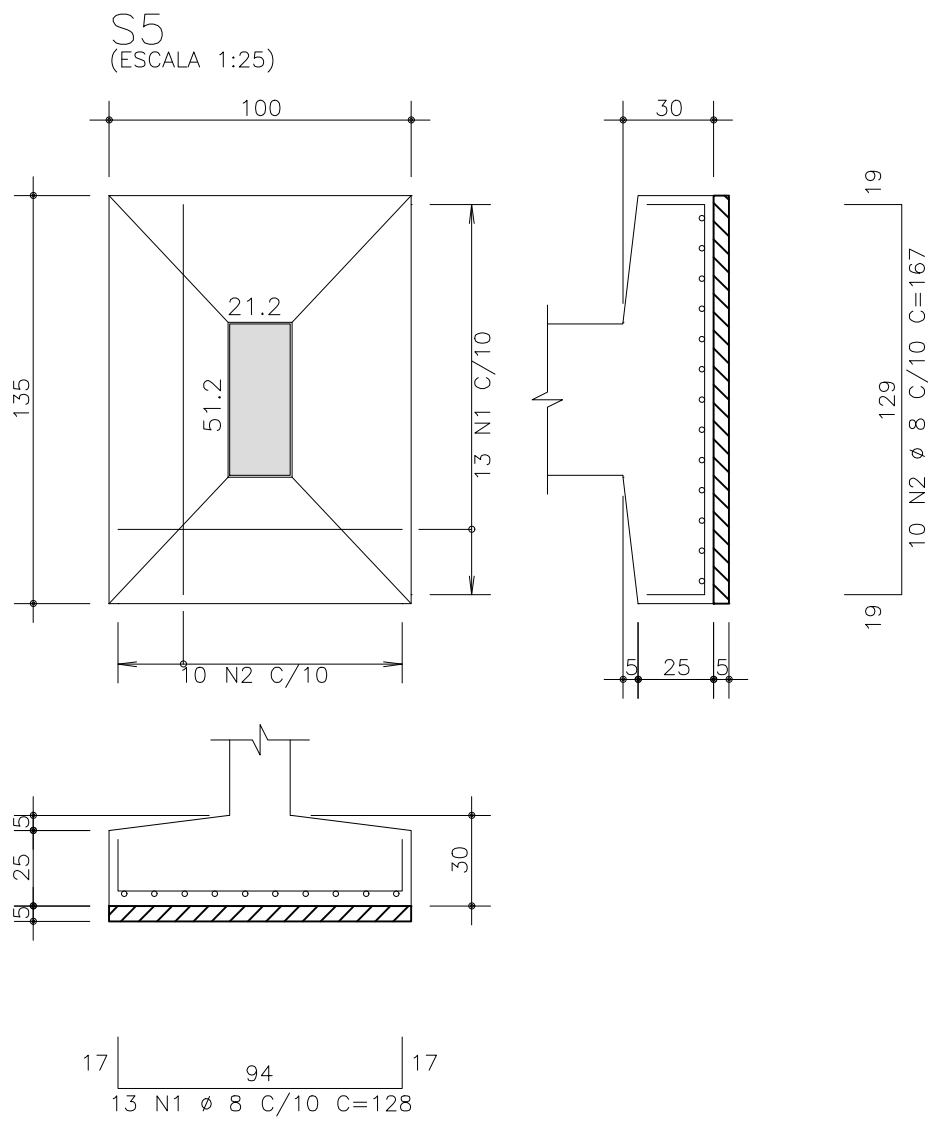
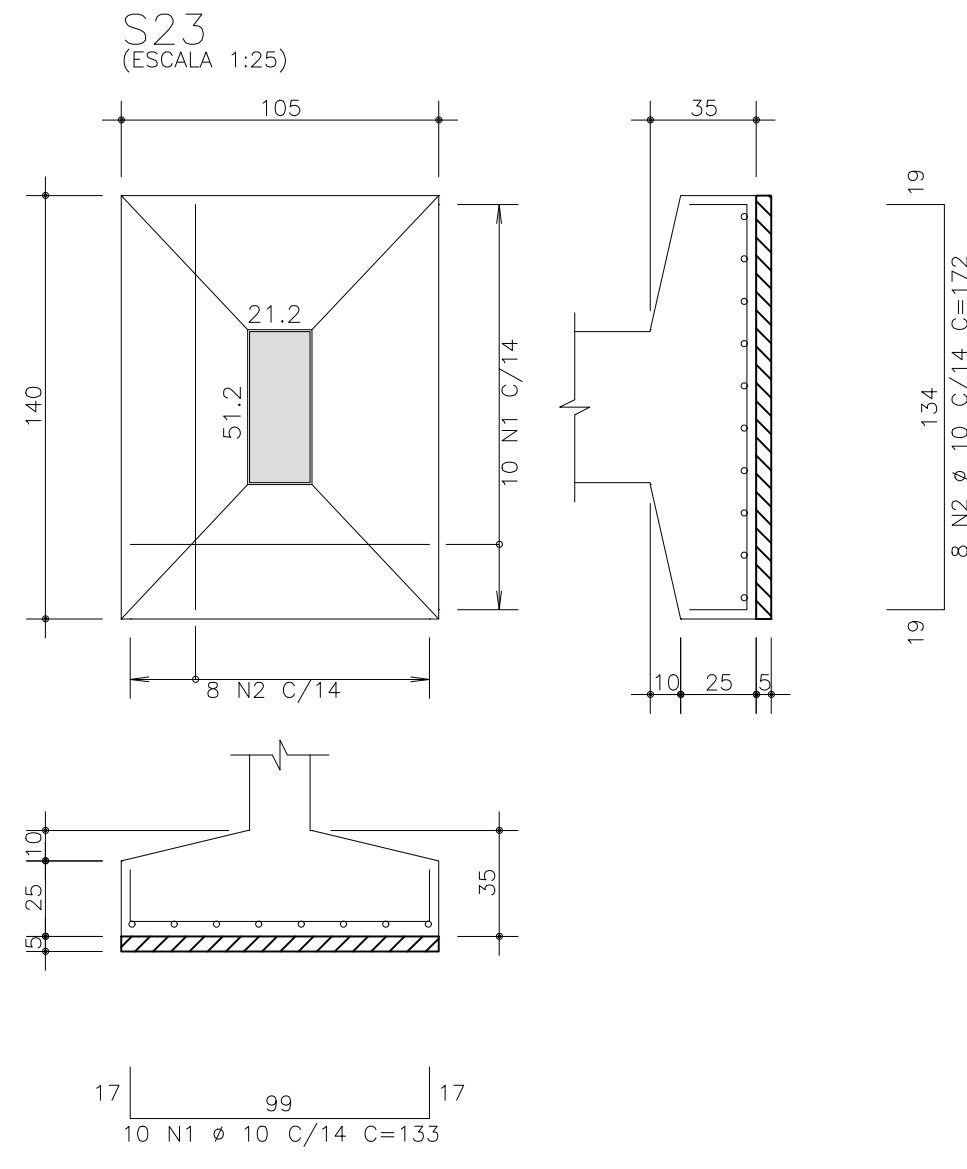
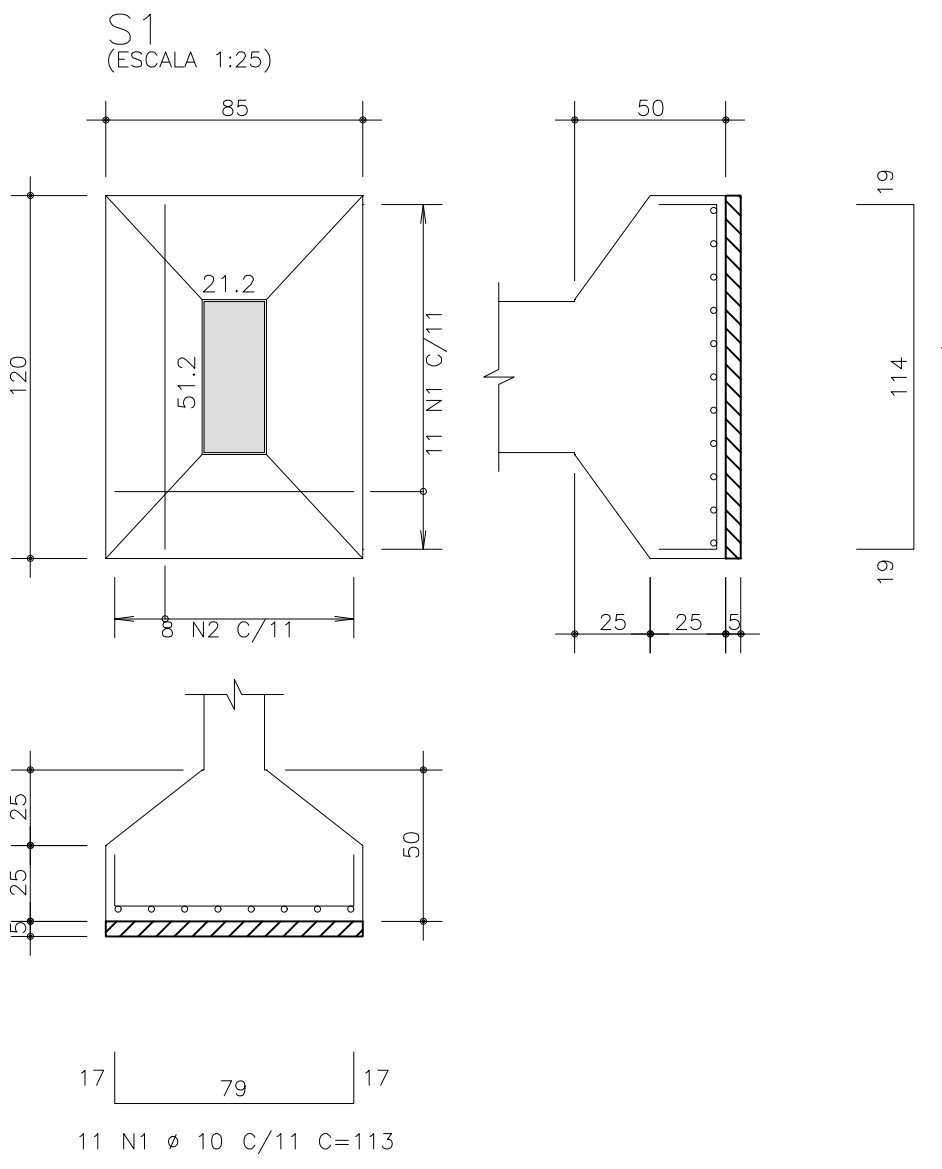
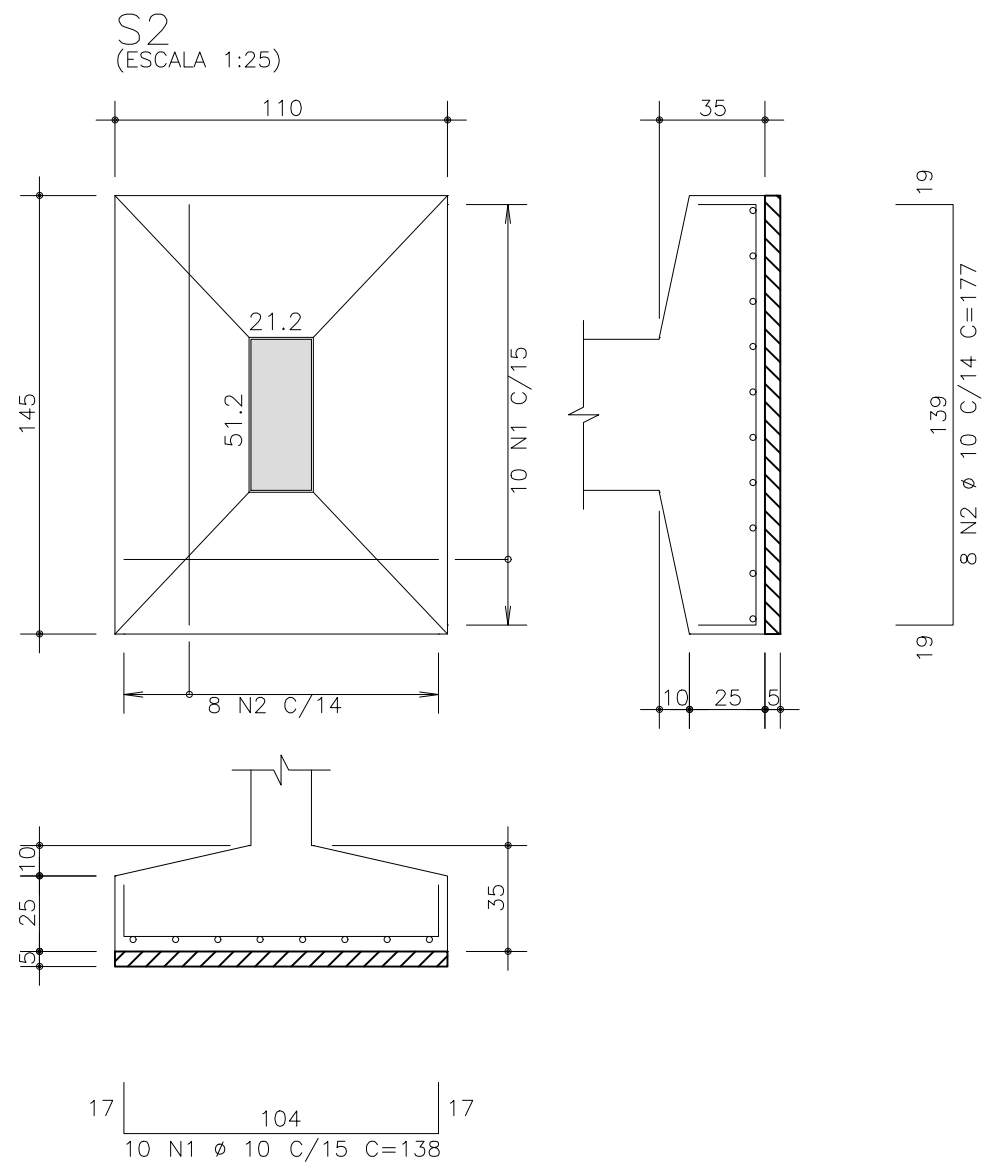


	AÇO	POS	BIT (mm)	QUANT	COMPRIMENTO	
					UNIT (cm)	TOTAL (cm)
S1	50A	1	10	11	113	1243
	50A	2	10	8	152	1216
S2	50A	1	10	10	138	1380
	50A	2	10	8	177	1416
S4	50A	1	10	12	143	1716
	50A	2	10	10	207	2070
S5	50A	1	8	13	128	1664
	50A	2	8	10	167	1670
S6	50A	1	10	10	138	1380
	50A	2	10	8	177	1416
S7	50A	1	8	13	128	1664
	50A	2	8	10	167	1670
S8	50A	1	10	11	108	1188
	50A	2	10	8	142	1136
S15	50A	1	10	12	148	1776
	50A	2	10	9	187	1683
S16	50A	1	8	13	128	1664
	50A	2	8	10	167	1670
S17	50A	1	8	13	123	1599
	50A	2	8	9	162	1458
S22	50A	1	8	13	128	1664
	50A	2	8	10	167	1670
S23	50A	1	10	10	133	1330
	50A	2	10	8	172	1376
S26	50A	1	10	15	158	2370
	50A	2	10	12	232	2784

RESUMO AÇO CA 50-60				
AÇO	BIT (mm)	COMPR (m)	PESO (kg)	
50A	8	164	65	
50A	10	255	157	
Peso Total		50A =	222 kg	



O acesso ao Modelo Estrutural em dimensão pode ser executado pelo QR CODE ao lado, podendo acessar via celulares, tablets e quaisquer outros dispositivos.

Schuring & Schuring Ltda.
Escritório Técnico B.E.SCHURING – Projetos de Engenharia
Av. XV de Novembro, 489 – Porto 2o. Andar – Cuiabá MT
Fone:(065) 321 9959 – Fax:(065) 623 5066 – Email – schuring@terra.com.br

PROJETO:
PROPRIETÁRIO:
PREFEITURA MUNICIPAL
VARZEA GRANDE

RESP. TEC. EXECUÇÃO:
END.:

OBRA:
PREVIVAG

END.:

AUTORES DO PROJETO:

Andre Luiz Schuring
Eng.Civil – CREA 8697/D-MT

ASSUNTO:
DET ARM SAPATAS

PECAS DETALHADAS
S1 / S2 / S4 / S5 / S6 / S7 / S8 / S15
S16 / S17 / S22 / S23 / S26

FOI:
ESCALA:
1:50

DIREITOS AUTORAIS RESERVADOS
VERIFICAR MEDIDAS NA OBRA
ARQUIVO:

DATA:
29/11/2019

FOLHA No:
06